

**CONSTRUCTION PLANS FOR:**

**NATURAL GAS MAIN EXTENSION  
TRANSWESTERN INDUSTRIAL**

MATT SANTINI  
MAYOR

CALVIN COOLEY  
MAYOR PRO TEM

COUNCIL MEMBERS

KARI HODGE - WARD ONE  
CARY ROTH - WARD THREE  
GARY FOX - WARD FIVE

JAYCE STEPP - WARD TWO  
CALVIN COOLEY - WARD FOUR  
TAFF WREN - WARD SIX

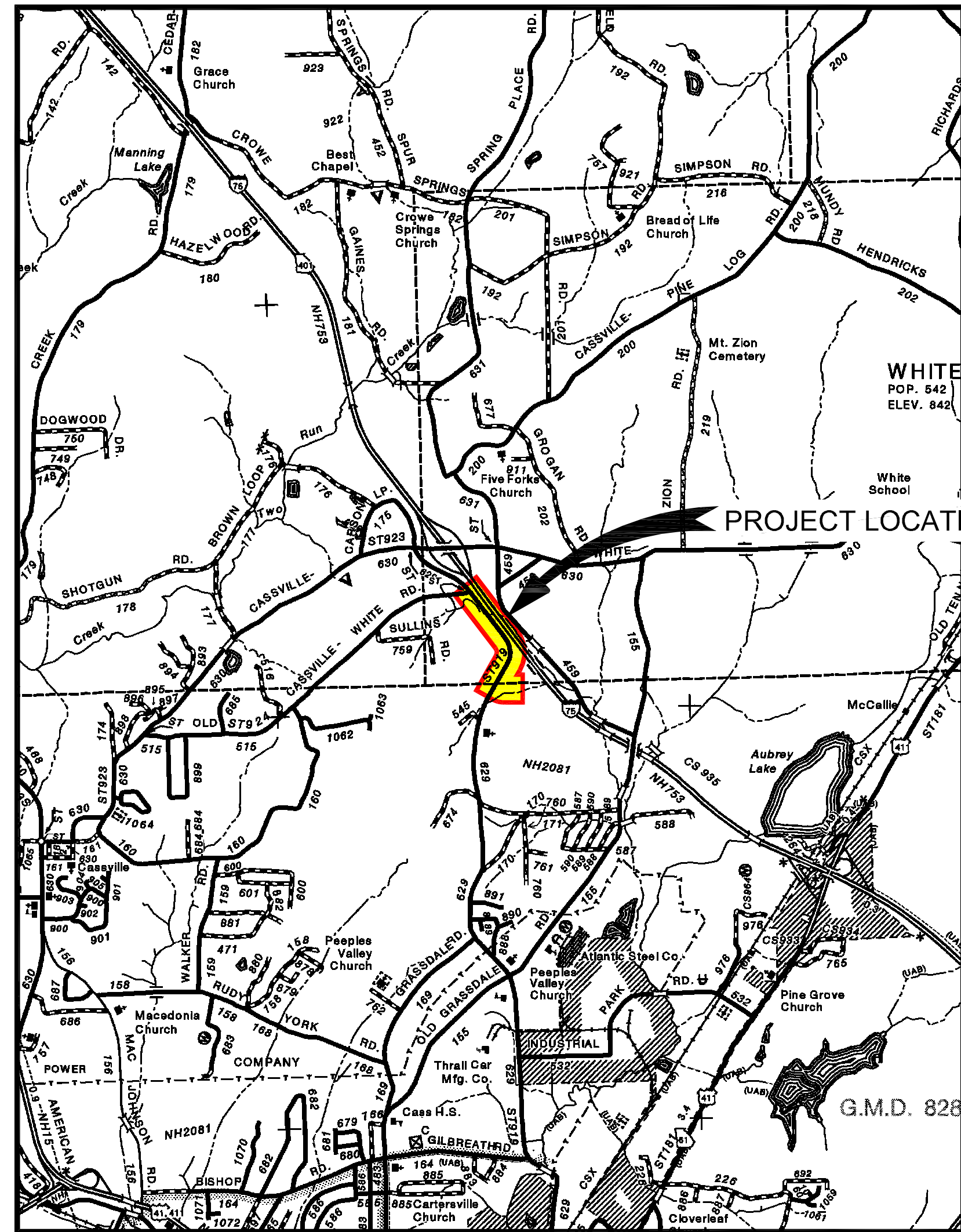
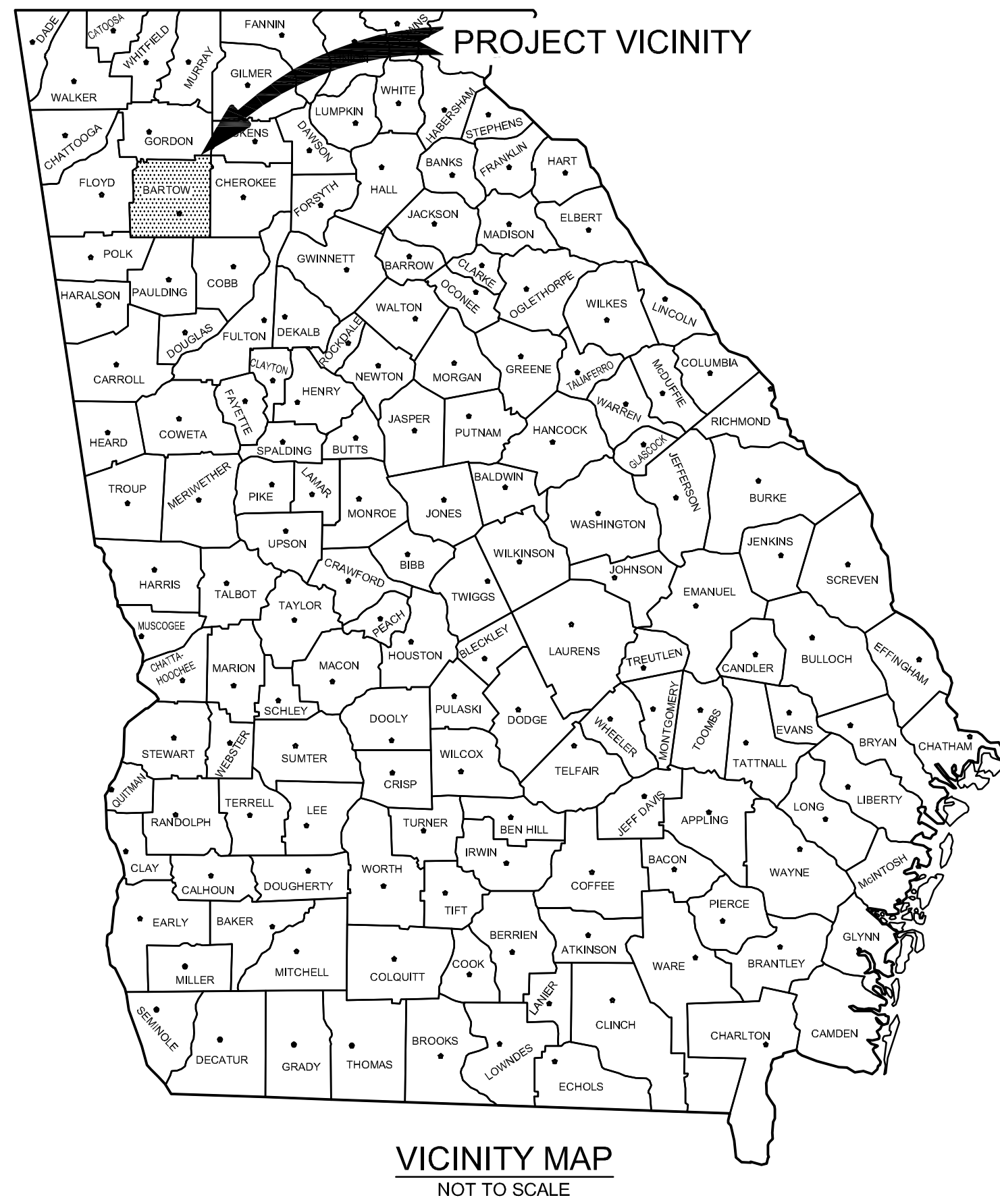
DAN PORTA - CITY MANAGER  
JULIA DRAKE - CITY CLERK  
MICHAEL DICKSON - GAS SYSTEM DIRECTOR  
BRIAN FRIERY - ASSISTANT GAS SYSTEM DIRECTOR



City of Cartersville

G A S S Y S T E M  
P.O. Box 1390 • 155 Old Mill Road • Cartersville, Georgia 30120  
Telephone: 770-387-5642 • Fax: 770-387-5638 • www.cityofcartersville.org

PROJECT NO. SP-21-004 DATE: FEBRUARY 2022



**SHEET DESCRIPTION** **SHEET NUMBER**

**DETAILS:**

LOCATION MAP-LEGENDS-GENERAL NOTES.....	DET-01
MISCELLANEOUS DETAILS.....	DET-02
2" REGULATING STATION: STATION PLAN AND PROFILE DETAIL.....	DET-03
2" REGULATING STATION: STATION SITE PLAN.....	DET-04
SILT & EROSION CONTROL DISTURBED AREA STABILIZATION.....	EC-DET-01
MISCELLANEOUS SILT & EROSION CONTROL DETAILS.....	EC-DET-02

**CONSTRUCTION PLANS:**

CONSTRUCTION PLAN: BEGIN PROJECT TO STA. 25+00.....	PLN-01
CONSTRUCTION PLAN: STA. 25+00 TO END PROJECT.....	PLN-02

**EROSION CONTROL PLANS:**

EROSION CONTROL PLAN: BEGIN PROJECT TO STA. 25+00.....	ERO-01
EROSION CONTROL PLAN: STA. 25+00 TO END PROJECT.....	ERO-02

**GENERAL NOTES**

- Topographic data was obtained from construction plans provided by the Southland Engineering of Cartersville, Georgia by CAD file with the exception of the existing and proposed natural gas facilities owned and operated by the City of Cartersville, Georgia.
- Proposed steel line pipe shall be installed with a cover of 48" from existing grade and shall be installed at greater depths where required by the plans or as directed. Proposed polyethylene line pipe shall be installed with a cover of 36" from existing grade and shall be installed at greater depths where required by the plans or as directed. A minimum 24" separation shall be maintained between the proposed pipe and existing structures and utilities.
- Marking tape shall be installed with a cover of 18" above the center line of all proposed steel and polyethylene pipe. Locate wire shall be installed with a cover of 6" above the center line of all proposed polyethylene pipe.
- Proposed line pipe shall be bored across all paved roadways and driveways unless otherwise called for in the plans. Bores will be paid for at the price bid for bores according to size separate from the line pipe price bid. Bores have been proposed across proposed driveways in the case the driveways have been paved prior to construction, otherwise, the crosses shall be open cut.  
  
Only those bores called for at the locations in the plans will be paid for at the price bid for bores. At the discretion of the Contractor, any portion of the proposed polyethylene pipe may be installed by directional bore in accordance with the specifications. Polyethylene pipe installed by directional bore will be paid for the unit price bid for polyethylene pipe as if installed by direct bury including temporary and permanent grassing and silt fence. There will be no additional compensation.
- Locations of underground utilities shown on the plans are not guaranteed as to accuracy nor completeness. It shall be the Contractor's responsibility to request field locations through the Utility Protection Center and any utility owners thought to have facilities in the area.
- It shall be the Contractor's responsibility to maintain a superintendent on the project at all times during construction with a thorough knowledge and understanding of the plans and specifications. The Contractor shall provide all necessary surveying, layout staking and expertise required to construct the proposed natural gas facilities at the locations shown in the plans.  
  
All construction staking from the project beginning to Sta. 24+00 will be the responsibility of the Contractor. All construction staking from Sta. 24+00 to the end of project will be the responsibility of the Developer.

**LEGEND OF NATURAL GAS FACILITIES**

— 18" HP GAS —	EXISTING HIGH-PRESSURE MAIN	Ⓐ	PROPOSED MAGNESIUM ANODE
— 12" LP GAS —	EXISTING LOW-PRESSURE MAIN	ⓧ	EXISTING FLANGED LINE VALVE
— 12" PE GAS —	EXISTING POLYETHYLENE MAIN	ⓧ	EXISTING WELDED/FUSION LINE VALVE
— 12" ABANDONED —	EXISTING MAIN TO BE ABANDONED	ⓧ	PROPOSED FLANGED LINE VALVE
-----	EXISTING ABANDONED MAIN	ⓧ	PROPOSED WELDED/FUSION LINE VALVE
- - - - -	EXISTING CASING PIPE	ⓧ	EXISTING FARM TAP REGULATOR
— 18" HP GAS —	PROPOSED HIGH-PRESSURE MAIN	ⓧ	PROPOSED FARM TAP REGULATOR
— 12" LP GAS —	PROPOSED LOW-PRESSURE MAIN	ⓧ	EXISTING METER
— 12" PE GAS —	PROPOSED POLYETHYLENE MAIN	ⓧ	PROPOSED METER
— 12" CASING —	PROPOSED CASING PIPE	ⓧ	EXISTING CATHODIC PROTECTION RECTIFIER
← FLOW —	ONE-WAY FEED & DIRECTION	ⓧ	PROPOSED CATHODIC PROTECTION RECTIFIER
← FLOW →	TWO-WAY FEED & DIRECTION	ⓧ	EXISTING REGULATING STATION
ⓧ	EXISTING CATHODIC PROTECTION TEST STATION	ⓧ	PROPOSED REGULATING STATION
ⓧ	PROPOSED CATHODIC PROTECTION TEST STATION		
ⓧ	EXISTING CATHODIC PROTECTION BOND STATION		
ⓧ	PROPOSED CATHODIC PROTECTION BOND STATION		



Know what's below.  
Call before you dig.

NATURAL GAS MAIN EXTENSION  
TRANSWESTERN INDUSTRIAL

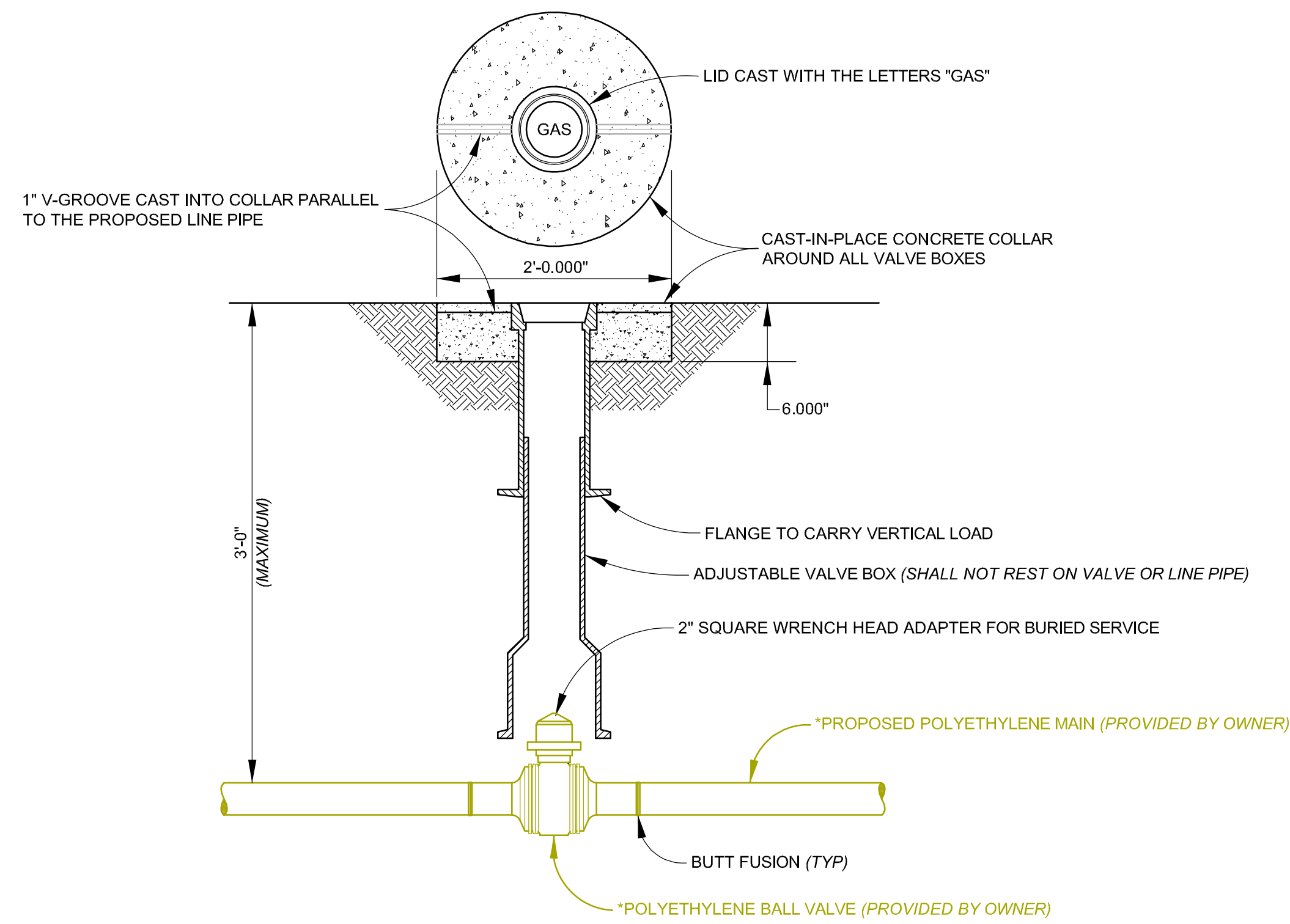
**LOCATION MAP-LEGENDS-GENERAL NOTES**

<p><b>City of Cartersville</b> G A S S Y S T E M</p> <p>P.O. Box 1390 • 155 Old Mill Road • Cartersville, Georgia 30120 Telephone: 770-387-5642 • Fax: 770-387-5638 • www.cityofcartersville.org</p>	DESIGNED: B.S.F.
	DATE: FEBRUARY 2022
	SCALE: NO SCALE
	PROJ NO: SP-21-004
	SHEET: DET-01

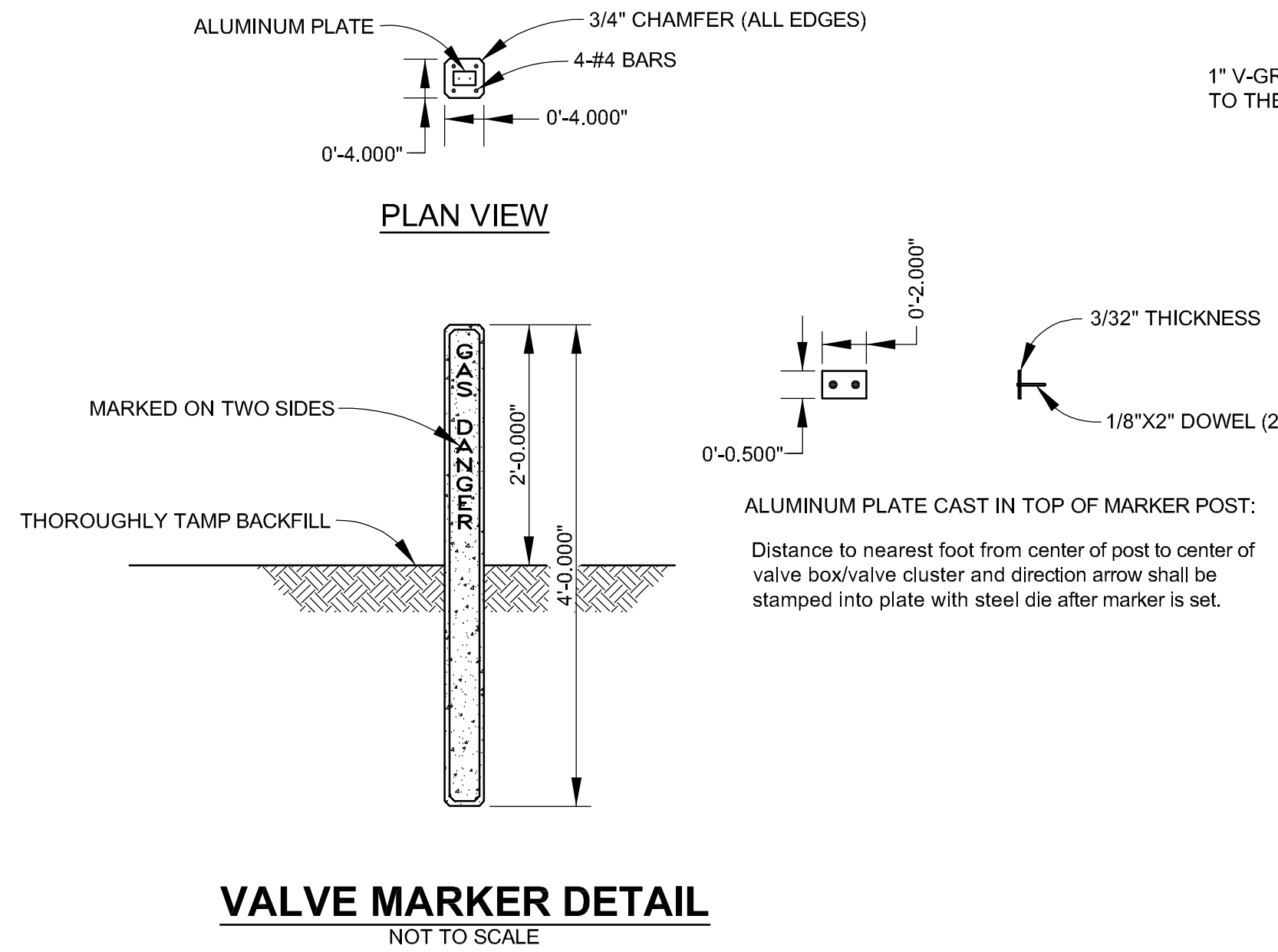
C:\BIB\BIB\APP\DATA\LOCAL\TEMP\ACRIB\BIB\1586852\21-004-DET-01.DWG FEBRUARY 15, 2022 - 2:59PM



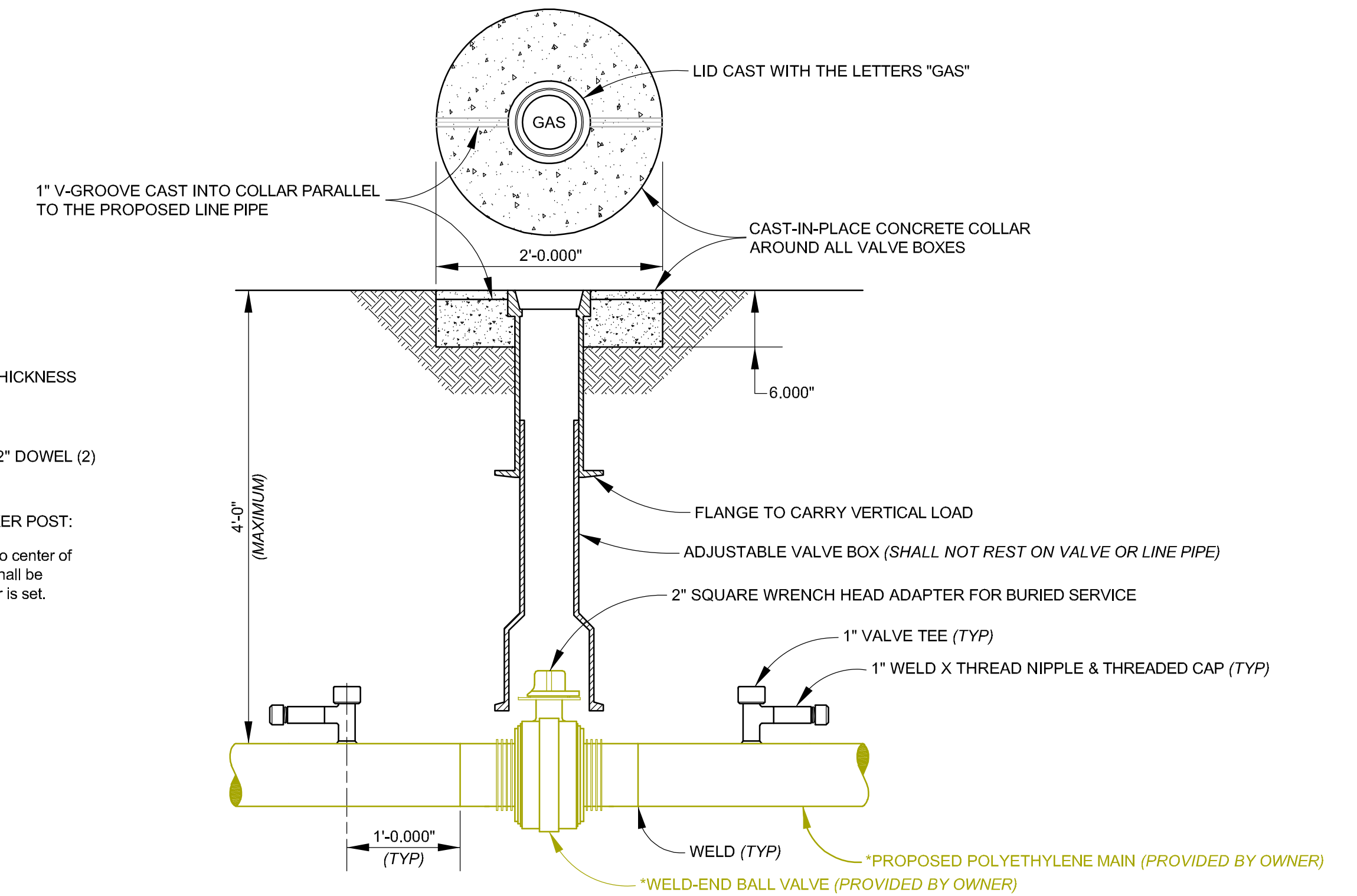
\*Note: Items shown in the color "dark yellow" on this plan denote those items provided by the Owner.



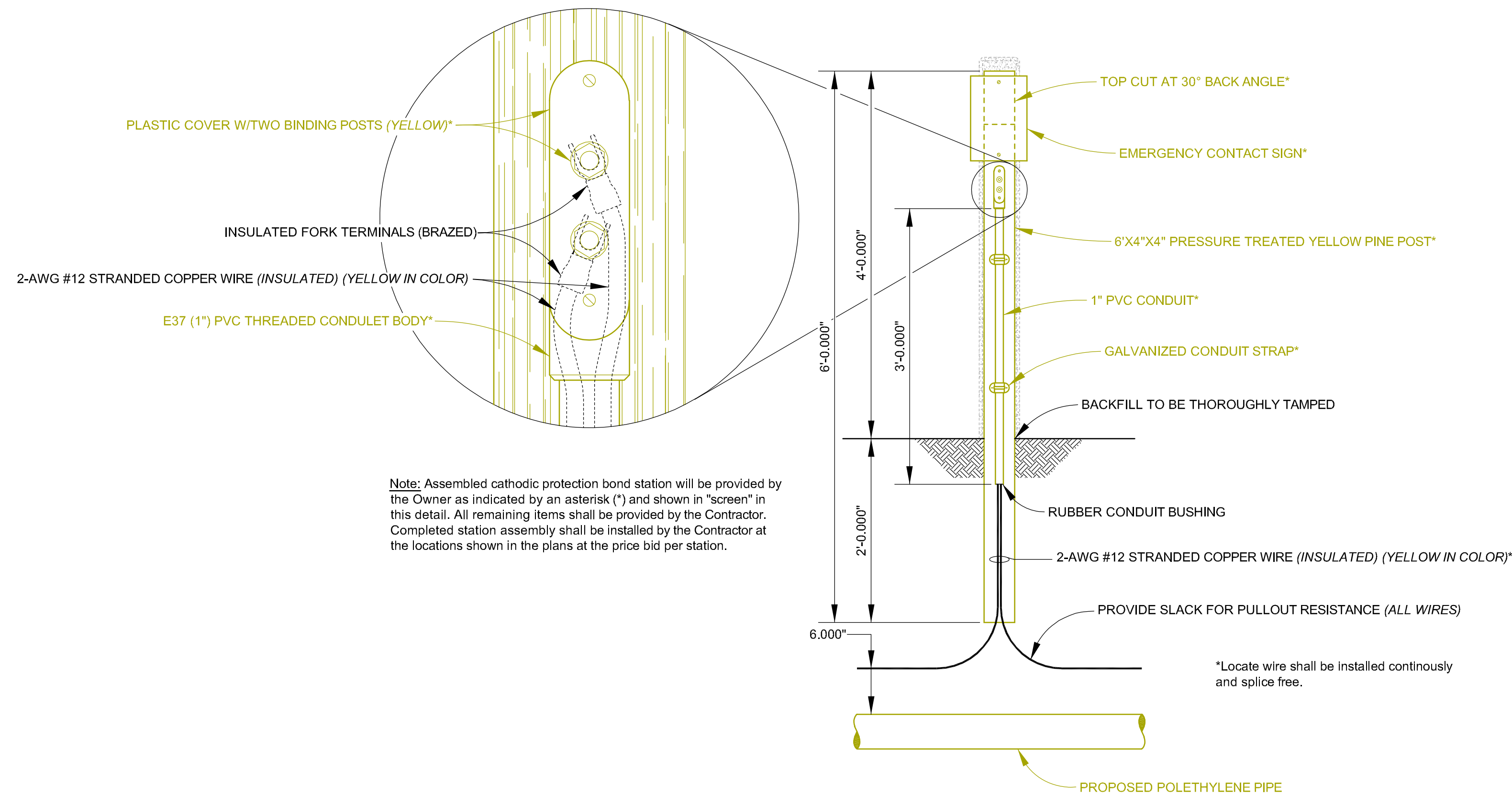
**TYPICAL POLYETHYLENE LINE VALVE ASSEMBLY DETAIL**  
NOT TO SCALE



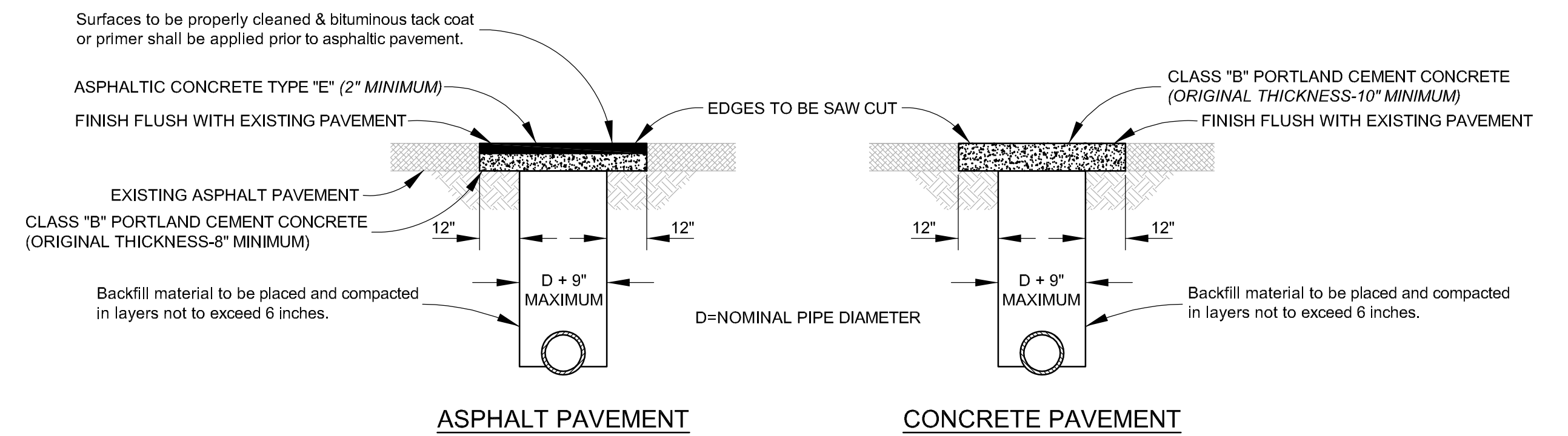
**VALVE MARKER DETAIL**  
NOT TO SCALE




**TYPICAL STEEL LINE VALVE ASSEMBLY DETAIL**  
NOT TO SCALE



**LOCATE STATION DETAIL**  
NOT TO SCALE

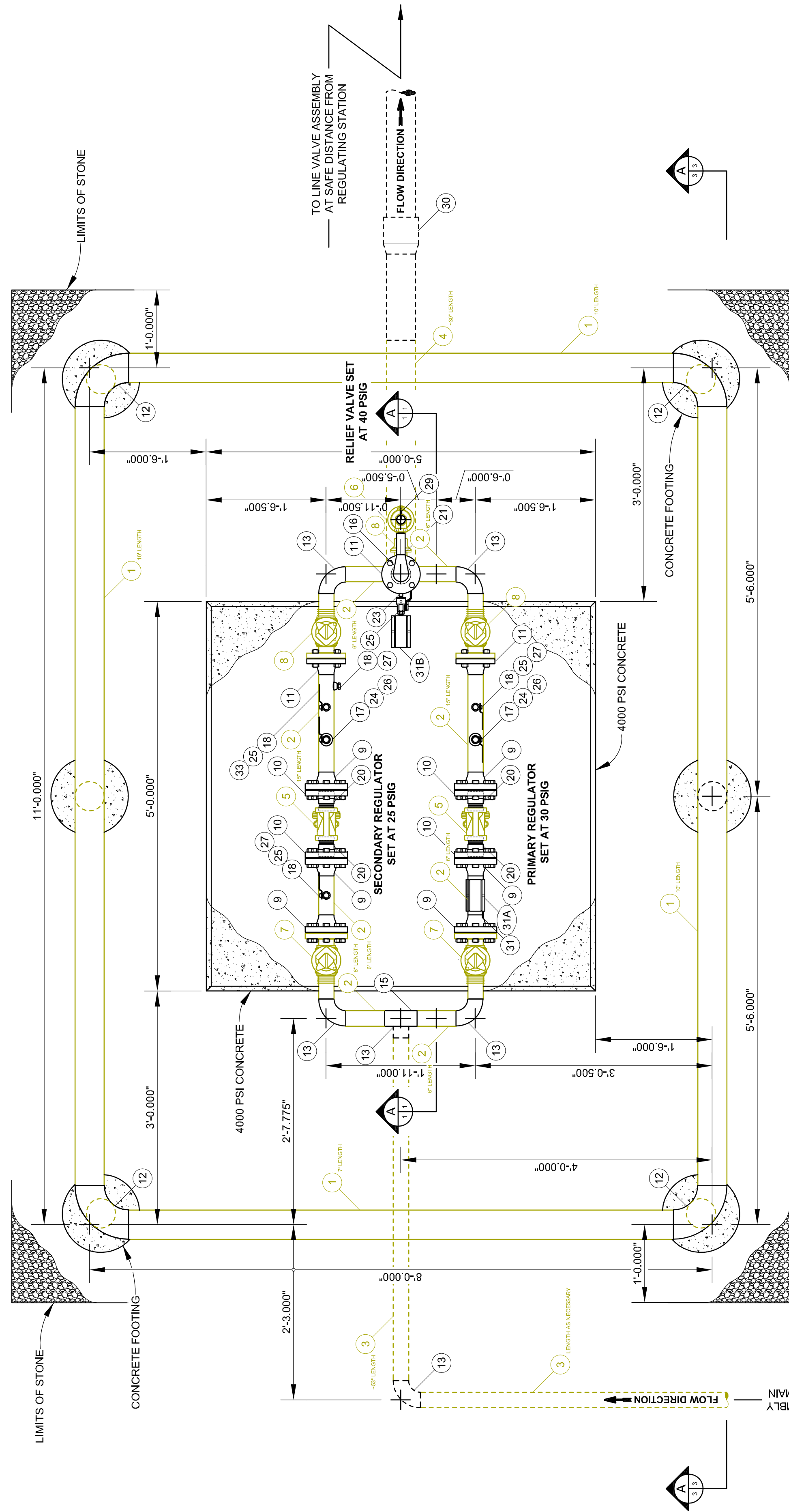


**TYPICAL PAVEMENT REMOVAL DETAILS FOR ROADWAYS**  
NOT TO SCALE

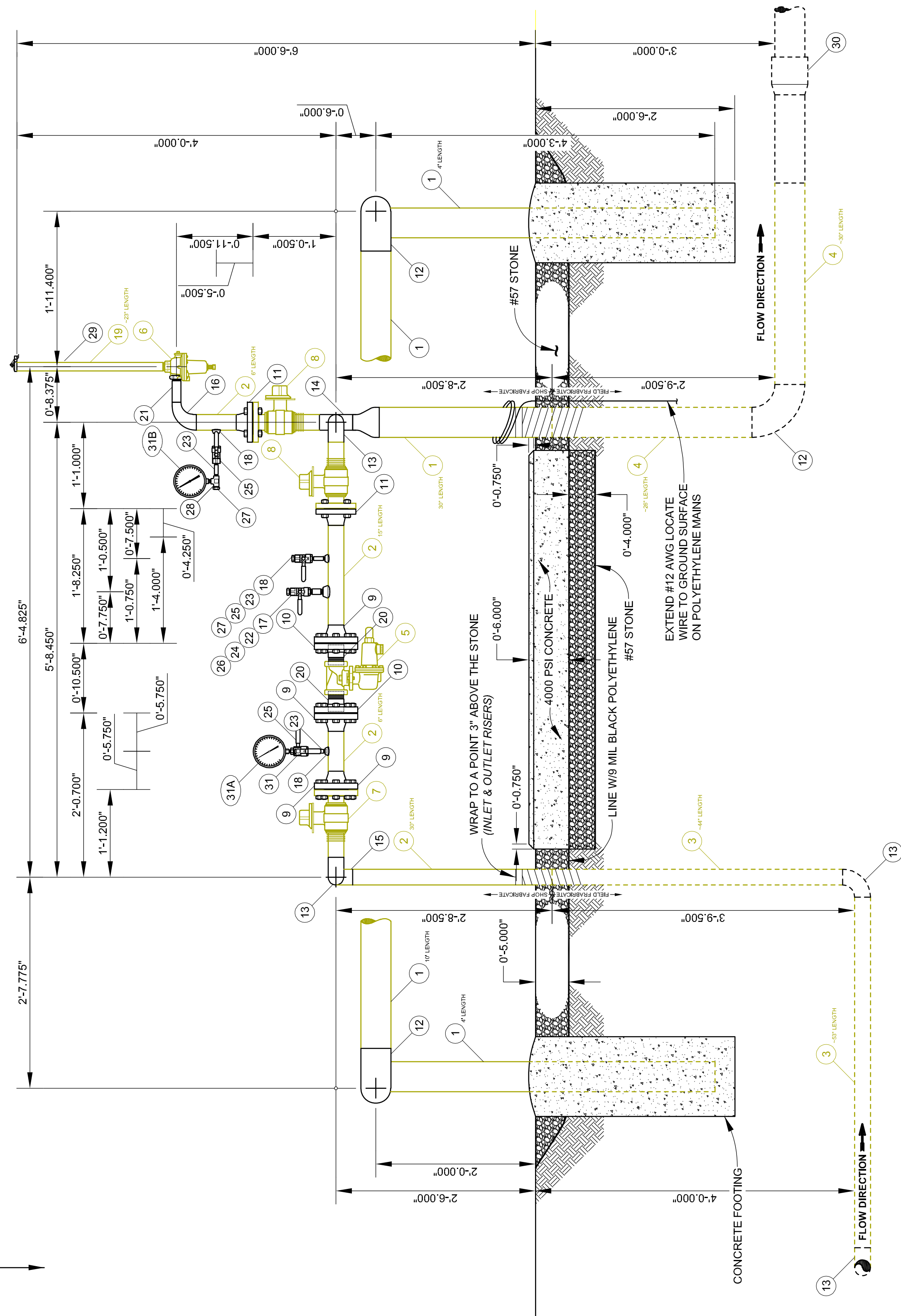
NATURAL GAS MAIN EXTENSION TRANSWESTERN INDUSTRIAL	
MISCELLANEOUS DETAILS	
 <b>City of Cartersville</b> GAS SYSTEM P.O. Box 1390 • 155 Old Mill Road • Cartersville, Georgia 30120 Telephone: 770-387-5642 • Fax: 770-387-5638 • www.cityofcartersville.org	DESIGNED: B.S.F.
	DATE: FEBRUARY 2022
	SCALE: NO SCALE
	PROJ NO: SP-21-004
SHEET: DET-02	

C:\BIBS\BIBS\APP\DATA\LOCAL\TEMP\ACRIBIBS\15586592-1004-DET-DWG FEBRUARY 15, 2022 - 2:57PM





PLAN VIEW  
SCALE: 0'-1.000"=1'-0.000"



SECTION A-A  
SCALE: 0'-1.000"=1'-0.000"

ITEM NO.	QTY.	UNIT	DESCRIPTION
1	61	L.F.	4-1/2" O.D.-188" W.T., BARE ERW X42 STEEL LINE PIPE
2	11	L.F.	2-3/8" O.D.-154" W.T., BARE ERW X42 STEEL LINE PIPE
3	15	L.F.	2-3/8" O.D.-154" W.T., F.B.E. COATED ERW X42 STEEL LINE PIPE
4	7	L.F.	4-1/2" O.D.-188" W.T., F.B.E. COATED ERW X42 STEEL LINE PIPE
5	2	EA.	2" FISHER TYPE 627 DUCTILE IRON THREADED REGULATOR, 1/4" ORIFICE, 15-40 PSIG SPRING RANGE, 100# W.P.
6	1	EA.	1" FISHER TYPE 288H ALUMINUM THREADED RELIEF VALVE, 15-50 PSIG SPRING RANGE, 100# W.P.
7	2	EA.	2" BALON SERIES "US" WELD X FLANGE END BALL VALVE W/ LOCK PLATE, ANSI CLASS 300, 740# W.P.
8	3	EA.	2" BALON SERIES "US" WELD X FLANGE END BALL VALVE W/ LOCK PLATE, ANSI CLASS 150, 285# W.P.
9	6	EA.	2" WELDING NECK FLANGE, ANSI CLASS 300, 740# W.P.
10	4	EA.	2" SLIP-ON FLANGE, ANSI CLASS 300, 740# W.P.
11	3	EA.	2" WELDING NECK FLANGE, ANSI CLASS 150, 285# W.P.
12	5	EA.	4"X90" BUTT WELD ELBOW, LONG RADIUS, STANDARD WEIGHT, SCHEDULE 40
13	6	EA.	2"X90" BUTT WELD ELBOW, LONG RADIUS, STANDARD WEIGHT, SCHEDULE 40
14	1	EA.	2" BUTT WELD CROSS, STANDARD WEIGHT, SCHEDULE 40
15	1	EA.	2"X2" BUTT WELD TEE, STANDARD WEIGHT, SCHEDULE 40
16	1	EA.	2"X1" BUTT WELD REDUCING ELBOW, STANDARD WEIGHT, SCHEDULE 40
17	2	EA.	1/2" THREAD-O-LET, STANDARD WEIGHT, SCHEDULE 40
18	6	EA.	1/4" THREAD-O-LET, STANDARD WEIGHT, SCHEDULE 40
19	2	L.F.	1" IPS-133" W.T., SMLS B, WELD X THREAD STEEL LINE PIPE
20	4	EA.	2"X3" LENGTH, SMLS B, THREAD X WELD STEEL NIPPLE
21	1	EA.	1"X4" LENGTH, SMLS B, THREAD X WELD STEEL NIPPLE
22	2	EA.	1/2"X3" LENGTH STAINLESS STEEL THREADED NIPPLE
23	6	EA.	1/4"X3" LENGTH STAINLESS STEEL THREADED NIPPLE
24	2	EA.	1/2" STAINLESS STEEL BALL VALVE, 2,000# W.P.
25	5	EA.	1/4" STAINLESS STEEL BALL VALVE, 2,000# W.P.
26	2	EA.	1/2" STAINLESS STEEL HEX. HEAD PLUG, CLASS 2000
27	5	EA.	1/4" STAINLESS STEEL HEX. HEAD PLUG, CLASS 2000
28	1	EA.	1/4" STAINLESS STEEL THREADED TEE, CLASS 2000
29	1	EA.	1" WEATHER CAP W/INDICATING FLAG
30	1	EA.	4" STEEL TO POLYETHYLENE WELDED TRANSITION FITTING
31	2	EA.	PRESSURE GAUGE (GAUGE "A": 0-600 PSIG, GAUGE "B": 0-60 PSIG)

- GENERAL NOTES**
- All above ground piping and appurtenances shall be cleaned, primed and painted in accordance with the specifications. All material constructed of stainless steel, plastic, brass, anodized aluminum or other materials rated for outdoor use shall not be installed or shall be properly masked until all painting operations have been completed. The station shall be placed into service until the final paint coat has been applied and cured and all workmanship is acceptable to the Owner.
  - Thread sealer rated for use with natural gas shall be utilized on all threaded connections. All bolted flange openings shall be wrapped with an outdoor rated tape as called for in the specifications three-quarters around the diameter of the flange allowing for drainage of condensation.
  - Where applicable, relief valve orientation shall be such that diaphragm removal, pilot adjustment screw and pilot supply filter valve are downstream of regulating run. Rotate pilot and/or pilot supply filter as necessary.
  - The overall dimensions shown in this detail will be obtained by constructing this station with attention to the pipe dimensions indicated beside the item numbers shown in the detail. Overall dimensions do not include allowances for gaskets.
  - Bid limits of the regulating station shall extend to the limits of stone 1'-0" beyond the traffic barrier.
  - Items shown in the color "dark yellow" on this plan denote those items provided by the Owner.

**STATION CAPACITY DATA**  
**REGULATOR: FISHER 2" TYPE 627-1/4" ORIFICE RELIEF: FISHER TYPE 288H**  
 Regulator Capacity at 20% Droop: 40,200 SCFH (20,100 x 2)  
 Relief Capacity: 60,000 SCFH at 60 PSIG (Set + Buildup)  
 Residential Service: 160 Lots (250 SCFH/Lot)

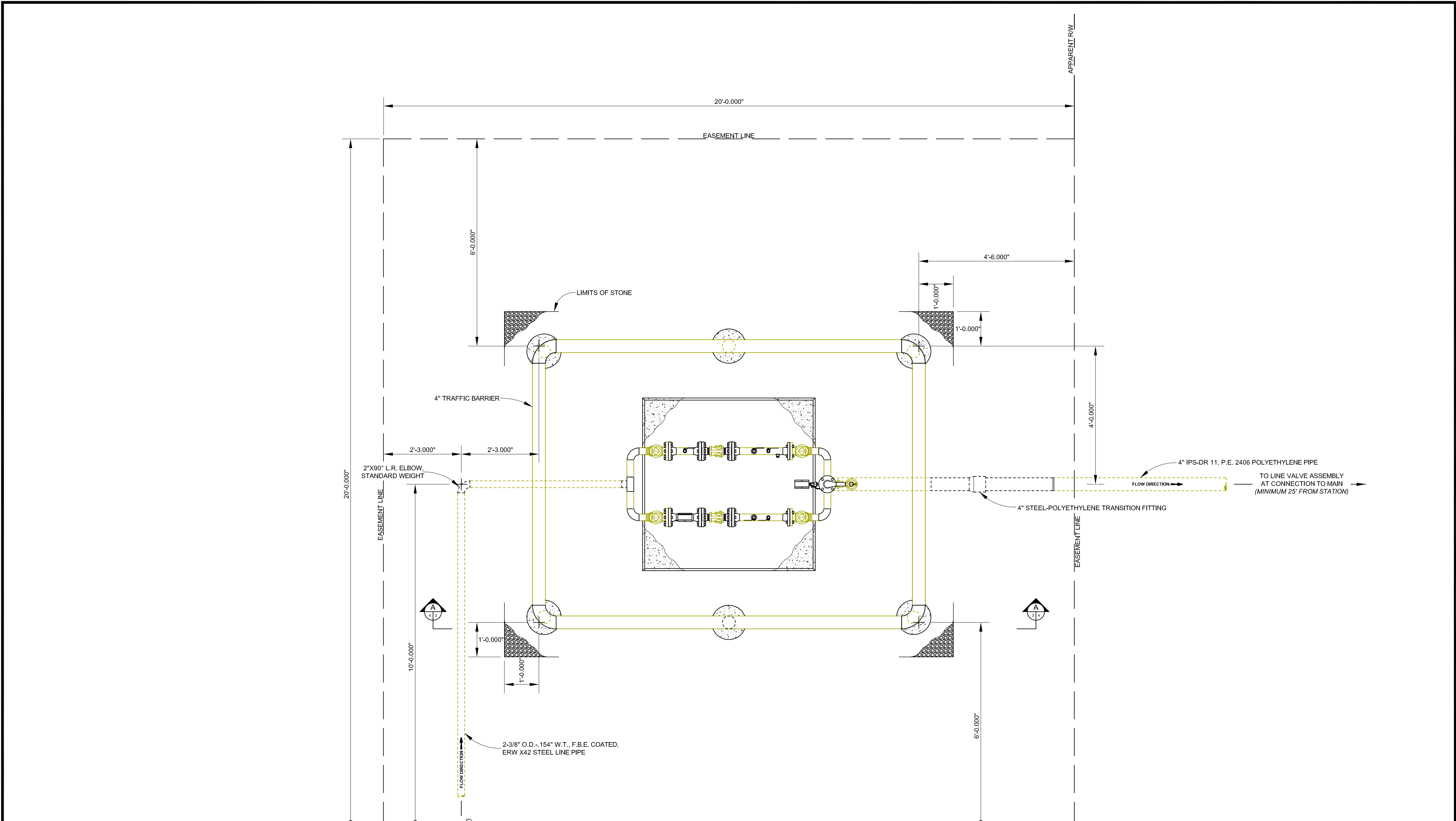
NATURAL GAS MAIN EXTENSION  
 TRANSWESTERN INDUSTRIAL

**2" REGULATING STATION**  
**STATION PLAN AND PROFILE DETAIL**



**City of Cartersville**  
 G A S S Y S T E M  
 P.O. Box 1390 • 155 Old Mill Road • Cartersville, Georgia 30120  
 Telephone: 770-387-5642 • Fax: 770-387-5638 • www.cityofcartersville.org


DESIGNED: B.S.F.  
 DATE: FEBRUARY 2022  
 SCALE: AS SHOWN  
 PROJ NO: SP-21-004  
 SHEET: DET-03



APPARENT R/W

TO LINE VALVE ASSEMBLY AT CONNECTION TO MAIN (MINIMUM 25' FROM STATION)

TO LINE VALVE ASSEMBLY AT CONNECTION TO MAIN (MINIMUM 25' FROM STATION)

<b>NATURAL GAS MAIN EXTENSION TRANSWESTERN INDUSTRIAL</b>	
<b>2" REGULATING STATION STATION SITE PLAN</b>	
 <b>City of Cartersville</b> <small>G A S S Y S T E M</small> <small>P.O. Box 1390 • 155 Old Mill Road • Cartersville, Georgia 30120 Telephone: 770-387-5642 • Fax: 770-387-5638 • www.cityofcartersville.org</small>	DESIGNED: B.S.F. DATE: FEBRUARY 2022 SCALE: 3/4"=1'-0" PROJ NO: SP-21-004 SHEET: DET-04

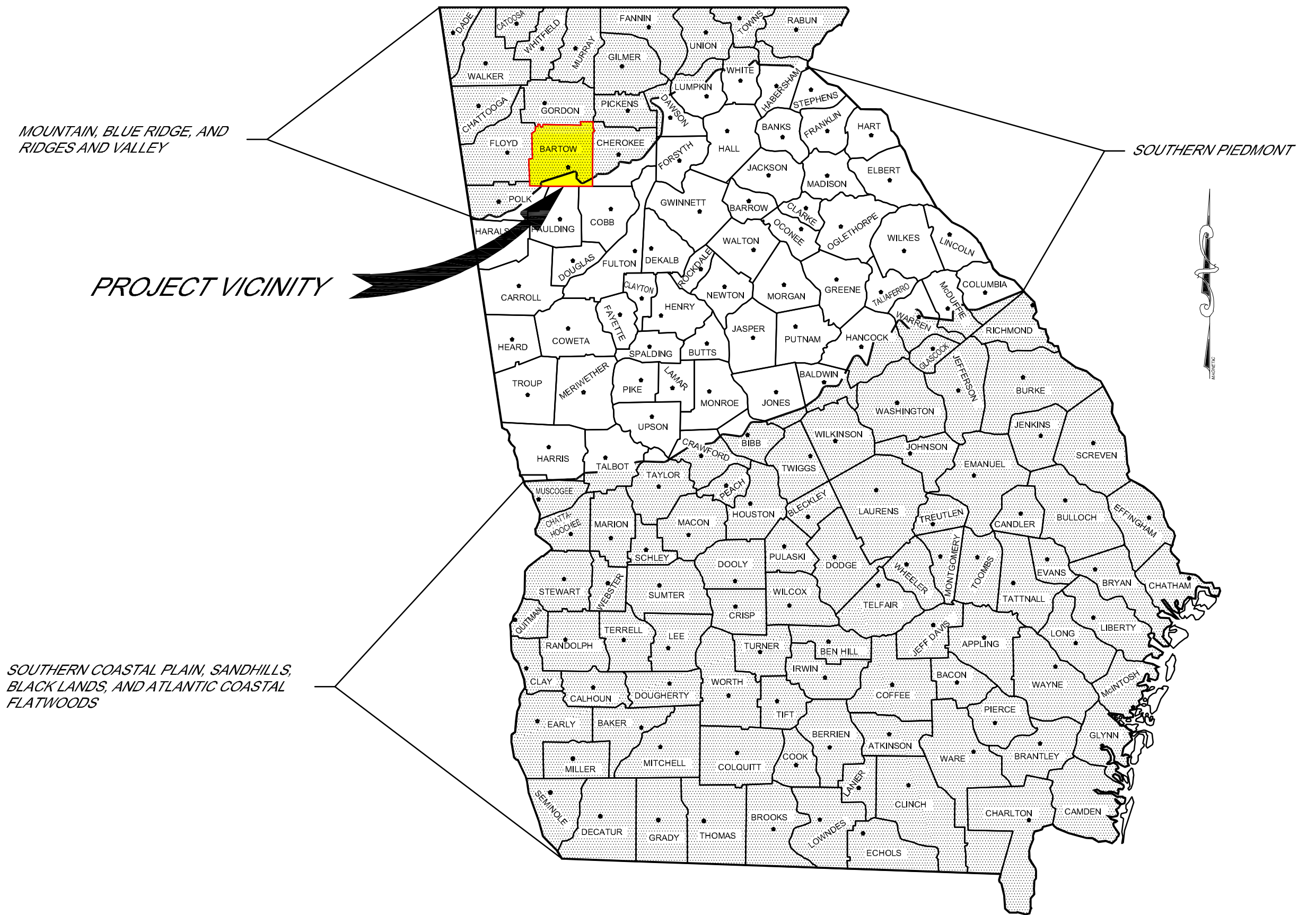
STORAGE:\GAS\ENGINEERING\PROJECTS\21-004\ANS\SP-21-004-DET.DWG FEBRUARY 16, 2022 3:18PM



PERMANENT PLANT SPECIES, SEEDING RATES AND PLANTING DATES

SPECIES	RATES PER ACRE	RATES PER 1,000 SQ. FT.	PLANTING DATES BY MLRA			REMARKS
			M-L	P	C	
Bahia, Pensacola: Alone or with temporary cover With other perennials	60 lbs. 30 lbs.	1.4 lbs. 0.7 lb.	---	4/1-5/31	3/1-5/31	Low growing; sod producing; will spread into Bermuda lawns.
Bahia, Wilmington: Alone or with temporary cover With other perennials	60 lbs. 30 lbs.	1.4 lbs. 0.7 lb.	3/15-5/31	3/1-5/31	---	Same as above.
Bermuda, Common: (Hulled seed) Alone With other perennials	10 lbs. 6 lbs.	0.2 lbs. 0.1 lb.	---	4/1-5/31	3/15-5/31	Quick cover; low growing; sod forming; needs full sun.
Bermuda, Common: (Unhulled seed) With temporary cover With other perennials	10 lbs. 6 lbs.	0.2 lbs. 0.1 lb.	---	10/15-2/28	11/1-1/31	Plant with Winter annuals. Plant with Tall Fescue.
Bermuda Sprigs: Common lawn and Forage hybrids	40 cu.ft. Sod plugs 3'x3'	0.9 cu. ft.	4/15-6/15	4/1-6/15	4/1-5/31	1 cu. ft. = 650 sprigs; 1 bu = 1.25 cu. ft. or 800 sprigs
Crown Vetch: With winter annuals or cool season grasses	15 lbs.	0.3 lbs.	9/1-10/15	9/1-10/15	---	Mix with 30 lbs. Tall Fescue or 15 lbs. Rye; inoculate seed; plant only North of Atlanta.
Fescue, Tall: Alone With other perennials	50 lbs. 30 lbs.	1.1 lbs. 0.7 lbs.	3/1-4/1 or 8/15-9/30	8/15-10/15 or 2/15-4/15	---	Mix with perennial Lespedezas or Crown Vetch; not for droughty soils or heavy use areas.
Lespedeza, Sericea:  Scarified  Unscarified  Seed-bearing hay	60 lbs. 75 lbs. 3 tons	1.4 lbs. 1.7 lbs. 138 lbs.	4/1-5/31 9/1-2/28 10/1-2/1	3/15-5/31 9/1-2/28 10/1-2/28	3/1-5/15 9/1-2/28 9/15-1/15	Widely adapted and low maintenance; takes 2-3 years to establish; inoculate seed with EL inoculate; mix with Weeping Lovegrass, Common Bermuda, Bahia or Tall Fescue. Mix with Tall Fescue or winter annuals. Cut when seed is mature but before it shatters. Add Tall Fescue or winter annuals.
Lespedeza, Ambro Virgata or Appalaw:  Scarified  Unscarified	60 lbs. 75 lbs.	1.4 lbs. 1.7 lbs.	4/1-5/31 9/1-2/28	3/15-5/31 9/1-2/28	3/1-5/15 9/1-2/28	Spreading growth with height of 18"-24"; good in urban area; slow to develop good stands; mix with Weeping Lovegrass, Common Bermuda, Bahia Tall Fescue or winter annuals; do not mix with Sericea Lespedeza; inoculate see with EL inoculate.
Lespedeza, Shrub (Lespedeza Bicolor or Lespedeza Thumbergii) Plants	3'x3' spacing		11/1-3/31	11/1-3/15	11/15-2/28	Plant in small clumps for wildlife food and cover.
Lovegrass, Weeping: Alone With other perennials	4 lbs. 2 lbs.	0.1 lb. 0.05 lb.	4/1-5/31	3/15-5/31	3/15-5/31	Quick cover; drought tolerant; grows well with Sericea Lespedeza on road-banks and other steep slopes; short lived.
Maidencane sprigs:	2'x3' spacing		2/1-3/31	2/1-3/31	2/1-3/31	For very wet sites such as riverbanks and shorelines. Dig sprigs locally.
Panicgrass, Atlantic Coastal:	20 lbs.	0.5 lb.	---	3/1-4/30	3/1-4/30	Grows well on coastal sand dunes; mix with Sericea Lespedeza but not on sand
Reed Canary Grass: Alone With other perennials	50 lbs. 30 lbs.	1.1 lbs. 0.7 lb.	8/15-10/15	9/1-10/15	---	Grows similar to Tall Fescue; for wet sites <b>FLATWOODS</b>
Sunflower, Aztec Maximilian:	10 lbs.	0.2 lb.	4/15-5/31	4/15-5/31	4/1-5/31	Mix with Weeping Lovegrass or other low growing grasses or legumes.
Switchgrass:	20 lbs.	0.4 lb.	4/1-5/31	4/1-5/31	4/1-5/31	For streambank plantings, drainage ditches, and wet areas.

1. Rates are for broadcast seed. If a seed drill is used, reduce the rates by one-half.  
2. The resource areas are defined in the MLRAs of Georgia map.



MAJOR LAND RESOURCE AREAS (MLRAs) OF GEORGIA

NOT TO SCALE

ACTIVITY SCHEDULE

DESCRIPTION OF ACTIVITY	MARCH				APRIL				MAY				JUNE				JULY			
	1st	2nd	3rd	4th	1st	2nd	3rd	4th	1st	2nd	3rd	4th	1st	2nd	3rd	4th	1st	2nd	3rd	4th
Installation of silt & erosion control devices																				
Installation of pipeline & appurtenances																				
Maintenance of silt & erosion control devices																				
Dressing and permanent grassing																				
Removal of silt & erosion control devices																				

SUGGESTED SEEDBED DEPTHS

SLOPE	SEEDBED DEPTH
3:1 or Flatter	Less than 4" Depth
2:1 to 3:1	1" to 4" Depth
2:1 or Steeper	Depressions every 6"-8" hand dug, if necessary

FERTILIZER, LIME & MULCH REQUIREMENTS

TYPES OF SPECIES	PLANTING YEAR	FERTILIZER (N-P-K)	RATE (LBS./ACRE)	N TOP DRESSING RATE (LBS./ACRE)	LIME RATE (TONS/ACRE)	MULCH RATE (TONS/ACRE)
Cool season grasses	First	6-12-12	1500	50-100	2	2-1/2
	Second	6-12-12	1000	---		
	Maintenance	10-10-10	400	30		
Cool season grasses and legumes	First	6-12-12	1500	0-50	2	2-1/2
	Second	0-10-10	1000	---		
	Maintenance	0-10-10	400	---		
Warm season grasses	First	6-12-12	1500	50-100	2	2-1/2
	Second	6-12-12	800	50-100		
	Maintenance	10-10-10	400	30		
Warm season grasses and legumes	First	6-12-12	1500	50	2	2-1/2
	Second	0-10-10	1000	---		
	Maintenance	0-10-10	400	---		

GENERAL SILT & EROSION CONTROL NOTES

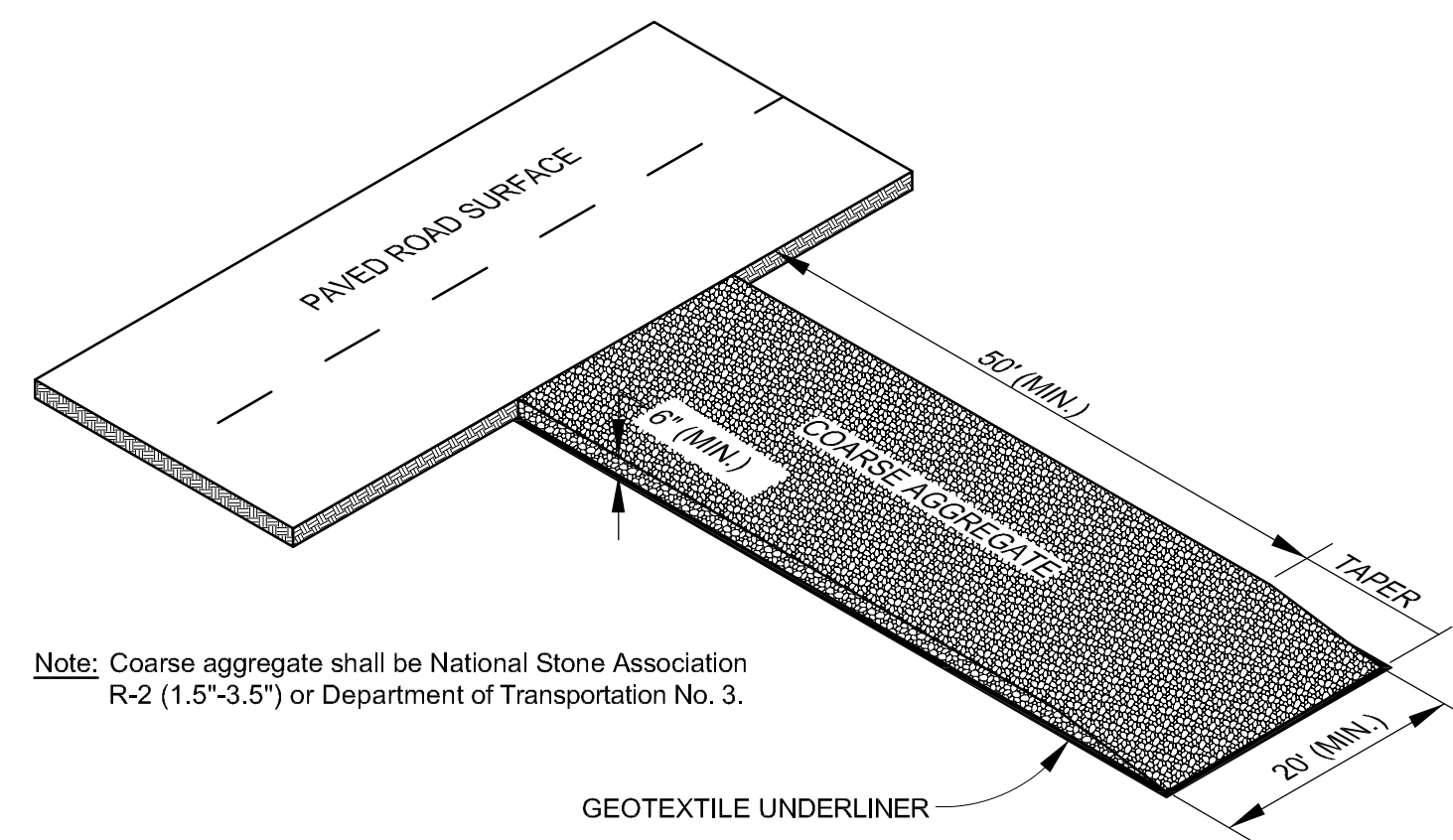
- The construction of this project requires Best Management Practices (BMPs) in the prevention of sedimentation and the control of erosion. All silt and erosion control devices installed, constructed and maintained on this project shall conform to the standards and specifications set forth by the "Manual for Erosion and Sediment Control in Georgia", latest edition and must withstand up to a 25-year rainfall event.
- The Contractor will be responsible for the prevention of sedimentation and erosion control in all areas disturbed by construction until permanent grassing has been established and sedimentation and erosion is no longer evident. All areas disturbed shall be mulched and remain mulched until a permanent stand of grass is achieved.
- The Contractor will be responsible for the protection of all existing silt and erosion control devices installed and constructed under this project.
- All silt and erosion control devices installed in accordance with the erosion control plan shall be properly maintained at all times until permanent grassing has been established. In all areas disturbed by construction and sedimentation and erosion is no longer evident. Such silt and erosion control devices shall be cleaned of accumulated silt before the devices reach half full and all devices shall be maintained in good working order. The installer shall inspect such silt and erosion control devices for proper installation and working order on a daily basis and immediately following each rainfall event. Any such devices that become damaged or is not in proper working order shall be immediately remedied or replaced. All silt or sediment leaving such areas disturbed by construction shall be immediately removed, cleaned and restored to as near as original condition as possible. If necessary, additional silt and erosion control measures will be required outside the areas disturbed by construction to prevent further sedimentation and erosion.
- Once permanent grassing has been established in all areas where the Contractor has been required to install silt and erosion control devices and sedimentation and erosion is no longer evident, the Contractor shall properly remove all silt and erosion control devices from the project site.
- Portions of the silt and erosion control for this project are the responsibility of the site developer. The limits of the silt and erosion control required by these plans are shown on the plans.

Ds3 DISTURBED AREA STABILIZATION (PERMANENT VEGETATION)

NATURAL GAS MAIN EXTENSION  
TRANSWESTERN INDUSTRIAL  
SILT & EROSION CONTROL  
DISTURBED AREA STABILIZATION

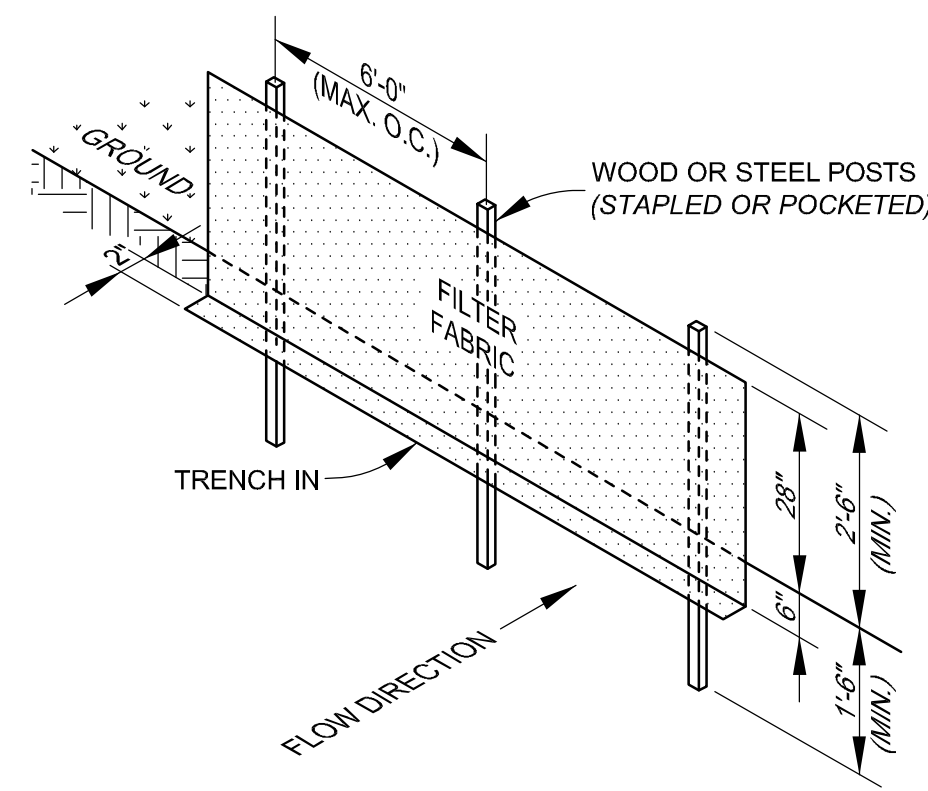
DESIGNED: B.S.F.  
DATE: FEBRUARY 2022  
SCALE: NO SCALE  
PROJ NO: SP-21-004  
SHEET: EC-DET-01

City of Cartersville  
G A S S Y S T E M  
P.O. Box 1390 • 155 Old Mill Road • Cartersville, Georgia 30120  
Telephone: 770-387-5642 • Fax: 770-387-5638 • www.cityofcartersville.org



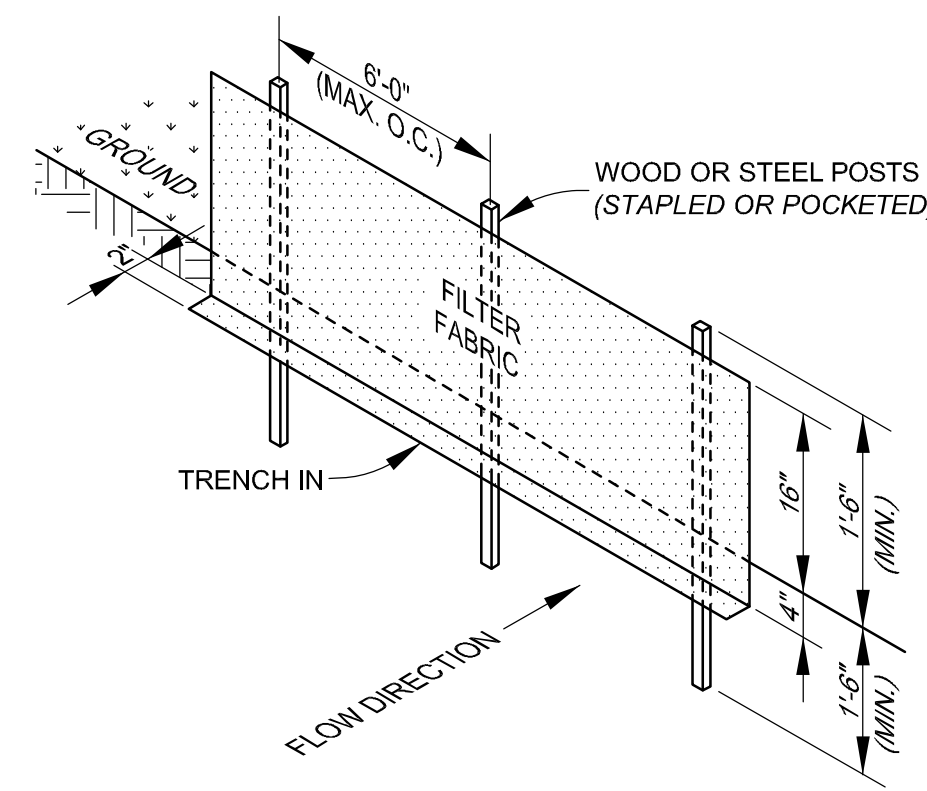
Note: Coarse aggregate shall be National Stone Association R-2 (1.5"-3.5") or Department of Transportation No. 3.

**Co CONSTRUCTION EXIT DETAIL**  
NOT TO SCALE



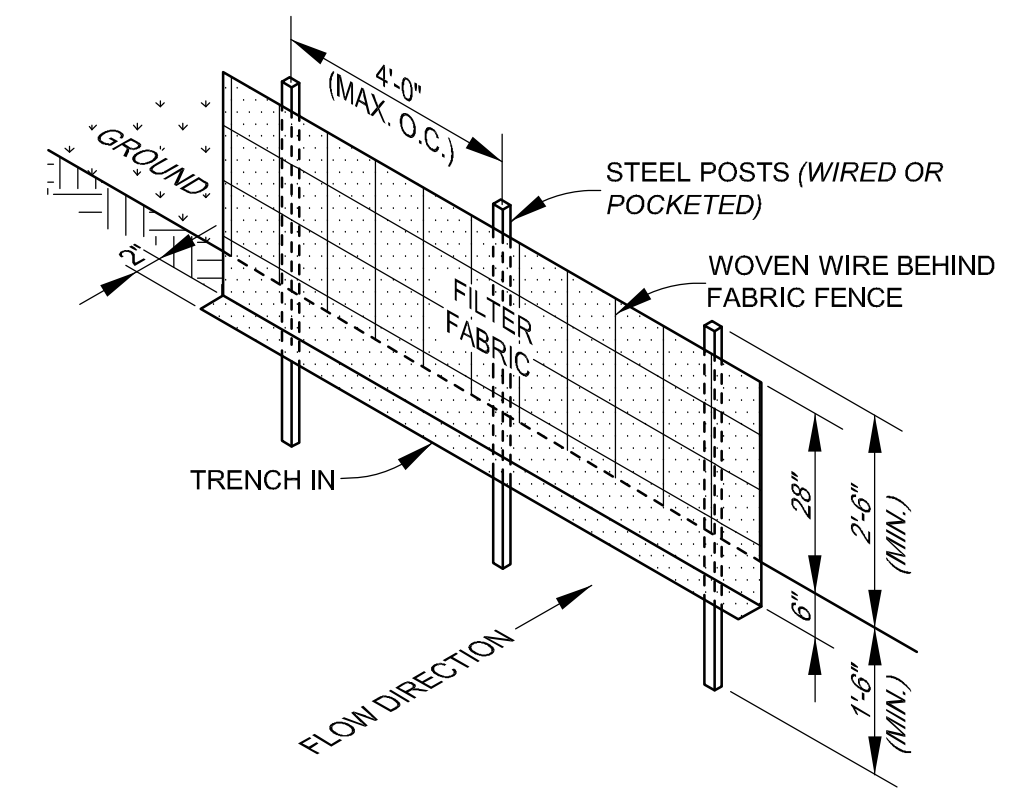
**TYPE "A"**

(use where life expectancy is greater than six months or slope gradient is steeper than 3:1 or otherwise directed)



**TYPE "B"**

(use where life expectancy is less than six months or slope gradient is less than or equal to 3:1 or otherwise directed)



**TYPE "C"**

(use where fill slopes exceed a vertical height of 20' and slope gradient is steeper than 3:1 or otherwise directed)

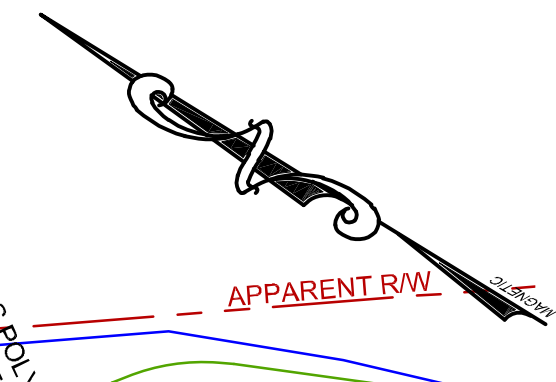
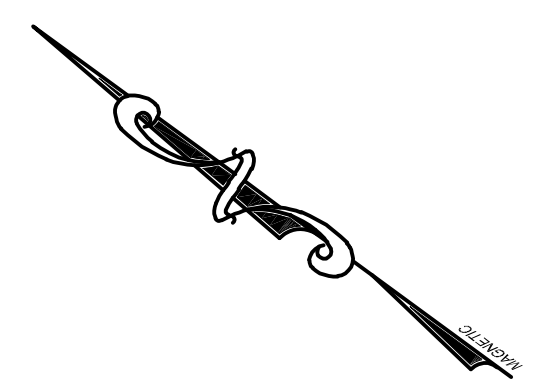
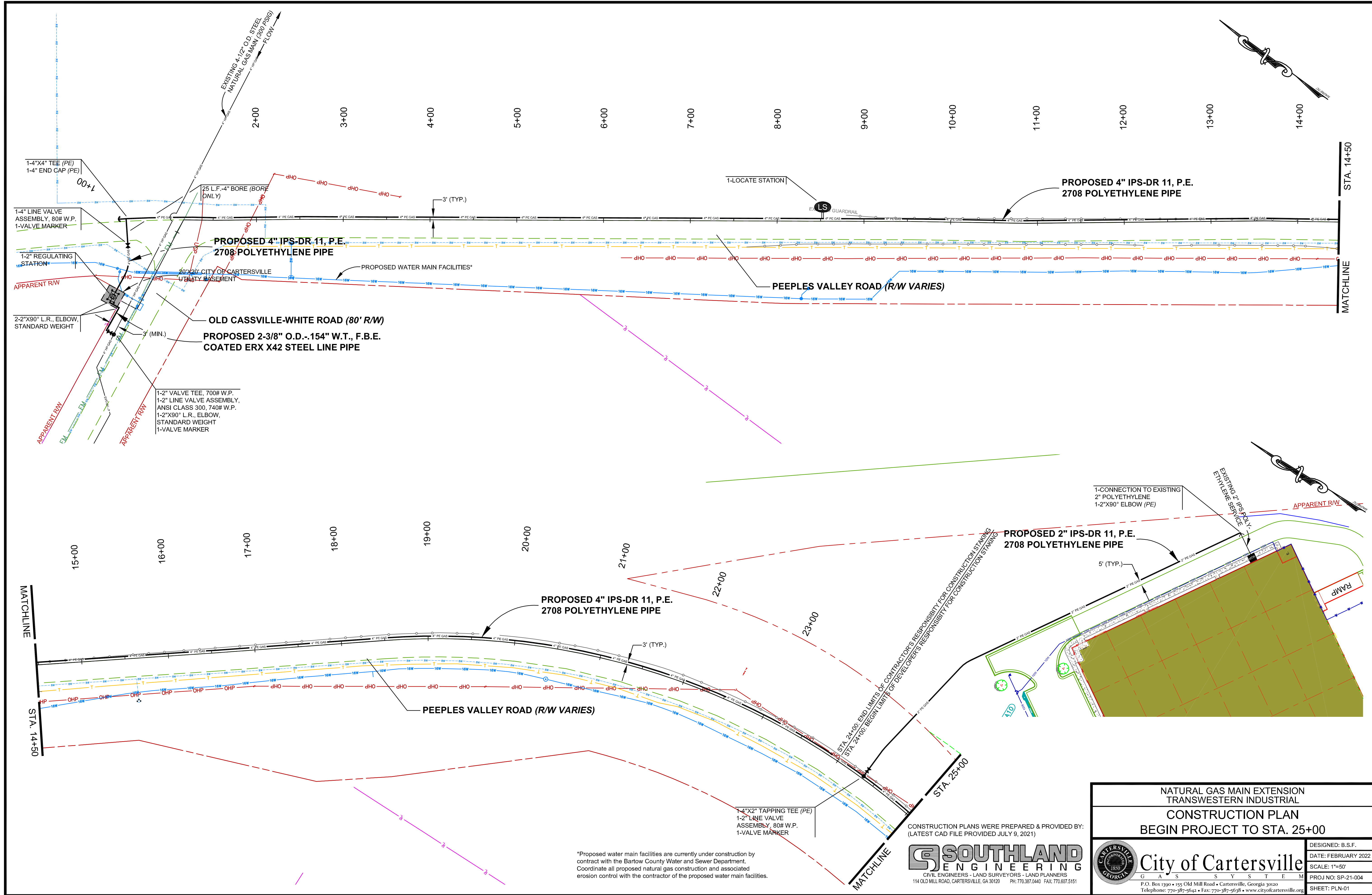
Note: Temporary silt fence shall meet the requirements of Section 171 - "Temporary Silt Fence" of the Georgia Department of Transportation's Standard Specifications for Road and Bridge Construction, Latest Edition.

**Sd1 TEMPORARY SILT FENCE DETAILS**  
NOT TO SCALE

NATURAL GAS MAIN EXTENSION TRANSWESTERN INDUSTRIAL	
MISCELLANEOUS SILT & EROSION CONTROL DETAILS	
 <b>City of Cartersville</b> <small>G A S S Y S T E M</small> <small>P.O. Box 1390 • 155 Old Mill Road • Cartersville, Georgia 30120</small> <small>Telephone: 770-387-5642 • Fax: 770-387-5638 • www.cityofcartersville.org</small>	DESIGNED: B.S.F.
	DATE: FEBRUARY 2022
	SCALE: NO SCALE
	PROJ NO: SP-21-004
SHEET: EC-DET-02	

C:\USERS\BRIAN\APPDATA\LOCAL\TEMP\ACRIBUILD\15268652\1004-DET-DWG FEBRUARY 15, 2022 - 2:57PM





\*Proposed water main facilities are currently under construction by contract with the Bartow County Water and Sewer Department. Coordinate all proposed natural gas construction and associated erosion control with the contractor of the proposed water main facilities.

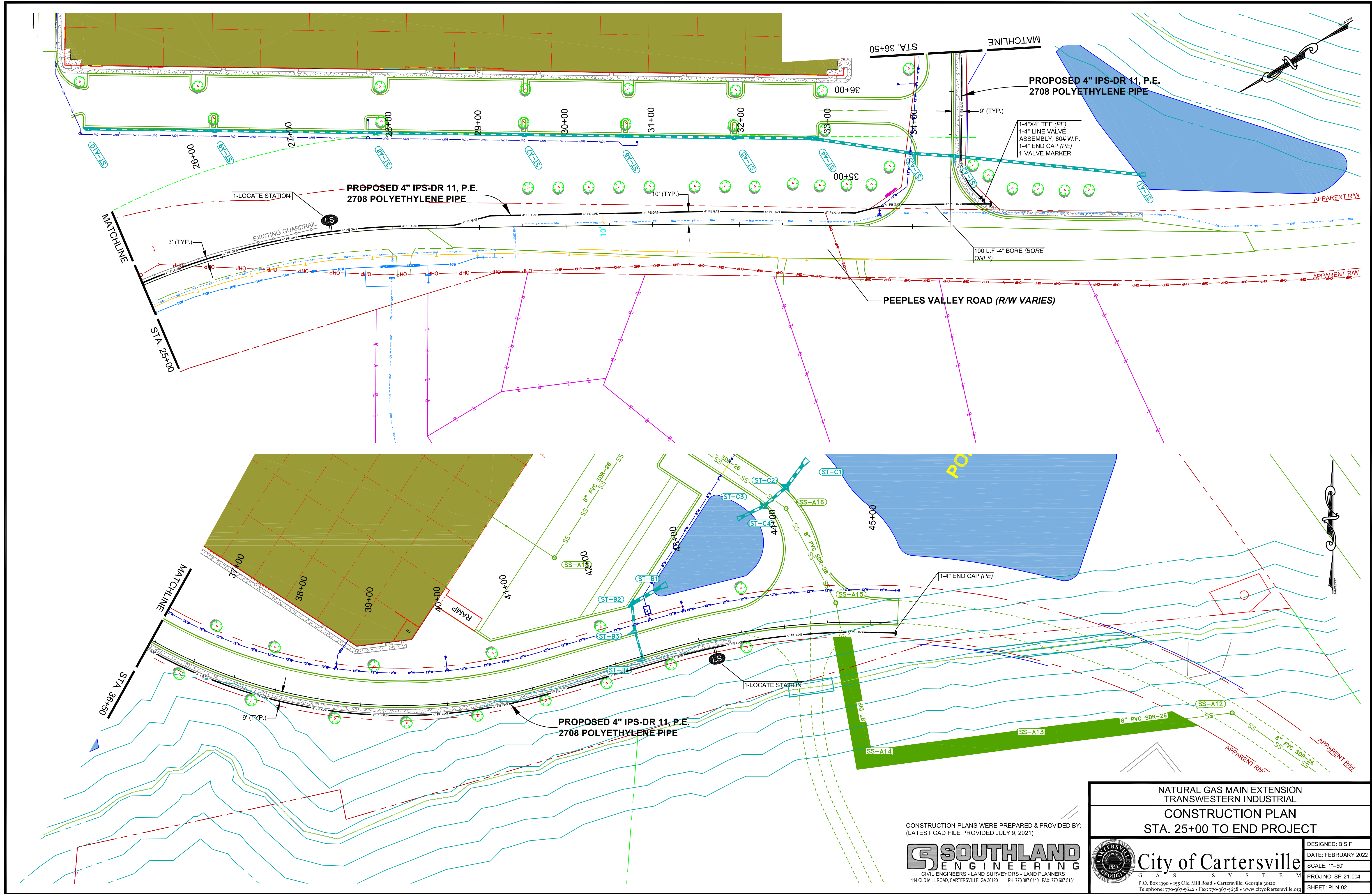
CONSTRUCTION PLANS WERE PREPARED & PROVIDED BY:  
(LATEST CAD FILE PROVIDED JULY 9, 2021)

**SOUTHLAND ENGINEERING**  
 CIVIL ENGINEERS - LAND SURVEYORS - LAND PLANNERS  
 114 OLD MILL ROAD, CARTERSVILLE, GA 30120 PH: 770.387.0440 FAX: 770.807.5151

NATURAL GAS MAIN EXTENSION TRANSWESTERN INDUSTRIAL <b>CONSTRUCTION PLAN</b> BEGIN PROJECT TO STA. 25+00	
DESIGNED: B.S.F. DATE: FEBRUARY 2022 SCALE: 1"=50' PROJ NO: SP-21-004 SHEET: PLN-01	 <p><b>City of Cartersville</b>          GAS SYSTEM          P.O. Box 1390 • 155 Old Mill Road • Cartersville, Georgia 30120          Telephone: 770-387-5642 • Fax: 770-387-5638 • www.cityofcartersville.org</p>

C:\BUREAU\PROJECTS\2021\SP-21-004\CONSTRUCTION\PLANS\CONSTRUCTION PLAN - BEGIN PROJECT TO STA. 25+00 - FEBRUARY 16, 2022 - 0334M





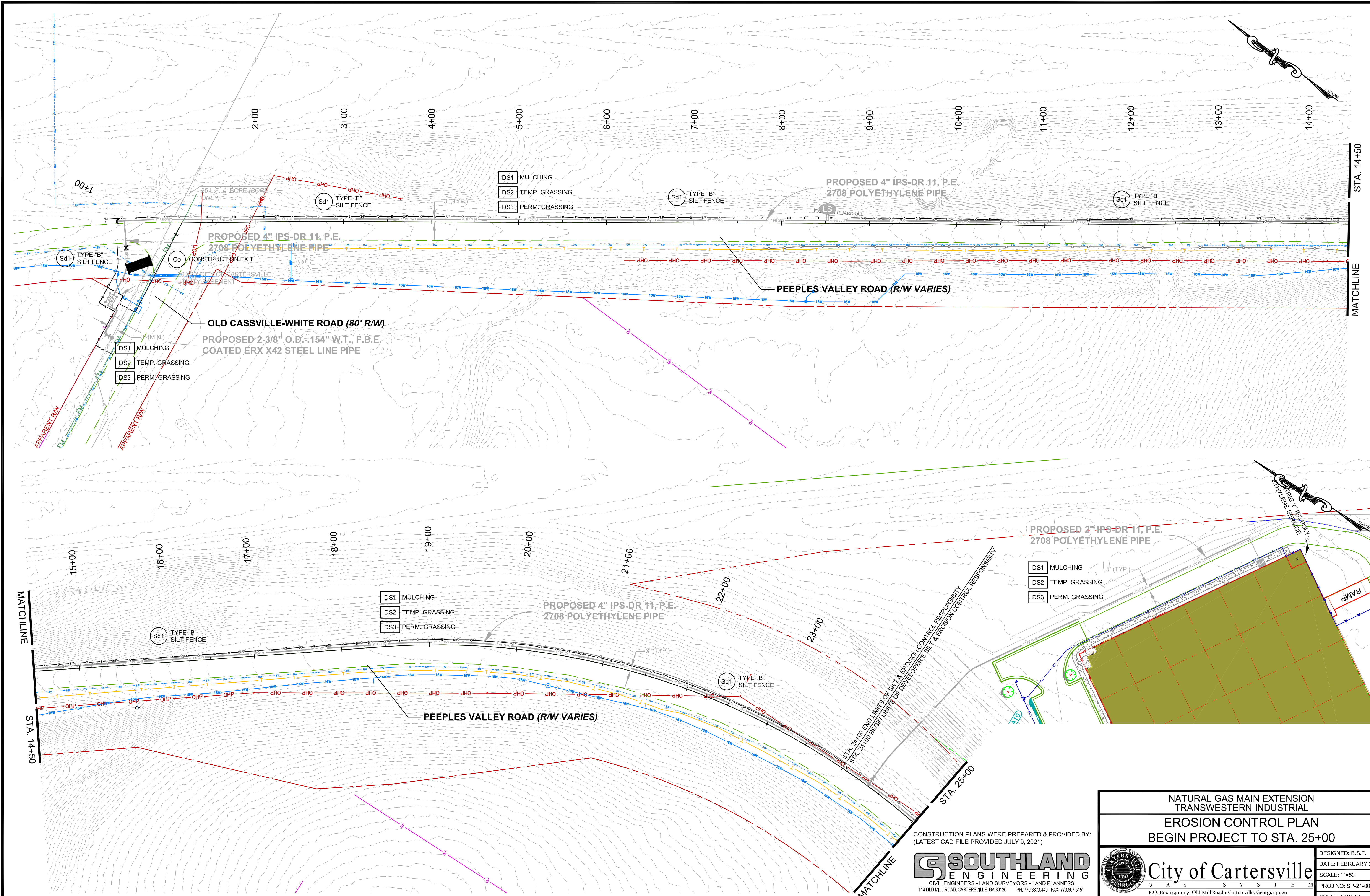
CONSTRUCTION PLANS WERE PREPARED & PROVIDED BY:  
(LATEST CAD FILE PROVIDED JULY 9, 2021)

**SOUTHLAND ENGINEERING**  
 CIVIL ENGINEERS - LAND SURVEYORS - LAND PLANNERS  
 114 OLD MILL ROAD, CARTERSVILLE, GA 30120 PH: 770.387.0440 FAX: 770.807.5151

NATURAL GAS MAIN EXTENSION TRANSWESTERN INDUSTRIAL <b>CONSTRUCTION PLAN</b> STA. 25+00 TO END PROJECT	
 <b>City of Cartersville</b> GAS SYSTEM P.O. Box 1390 • 155 Old Mill Road • Cartersville, Georgia 30120 Telephone: 770-387-5642 • Fax: 770-387-5638 • www.cityofcartersville.org	DESIGNED: B.S.F. DATE: FEBRUARY 2022 SCALE: 1"=50' PROJ NO: SP-21-004 SHEET: PLN-02

C:\BIBER\BIBER\DATA\LOCAL\TEMP\ACHRIBS\15172592\004\PLN02.DWG FEBRUARY 16, 2022 4:03PM






STA. 14+50  
MATCHLINE

MATCHLINE  
STA. 14+50

STA. 25+00  
MATCHLINE

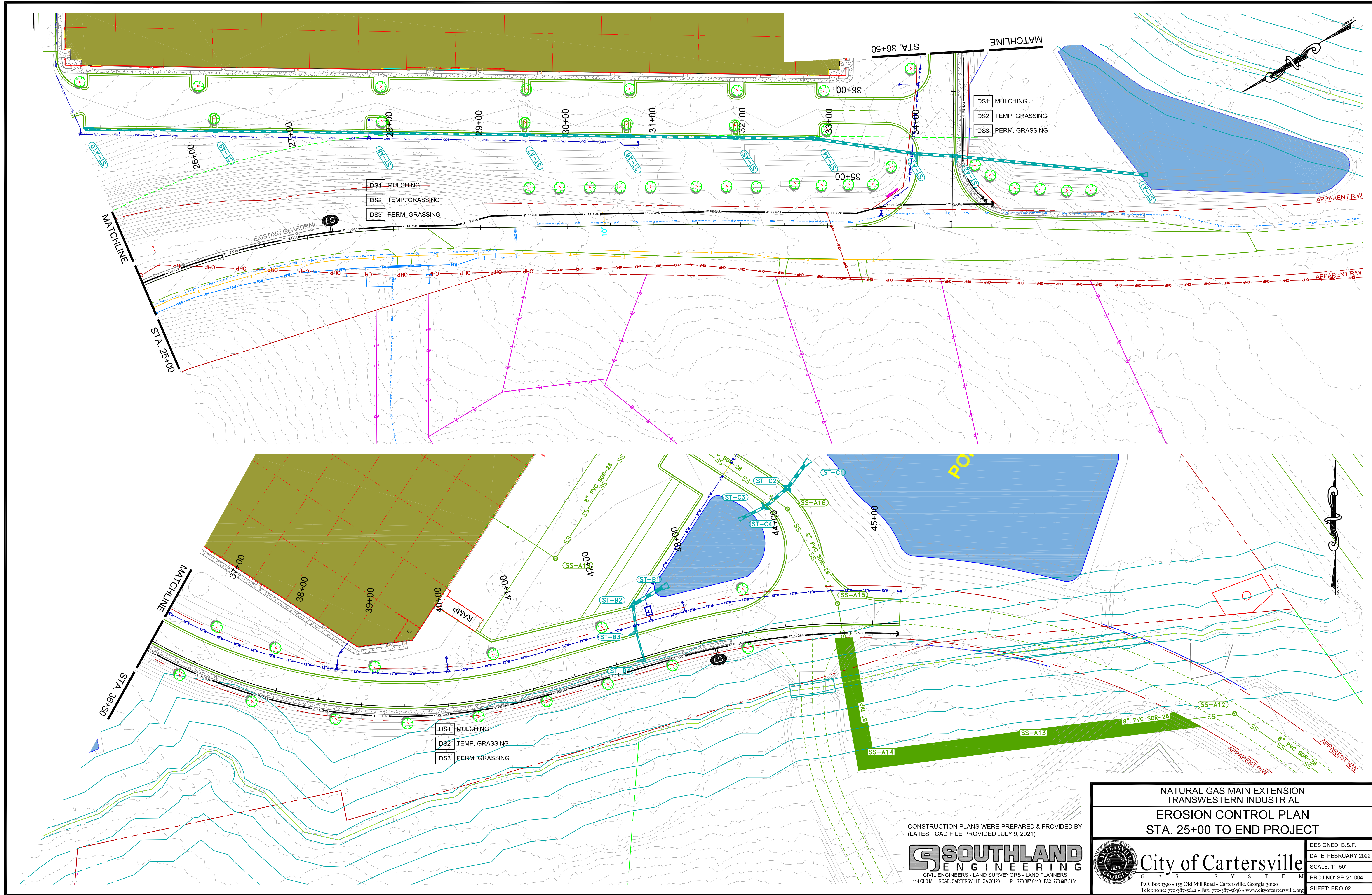
CONSTRUCTION PLANS WERE PREPARED & PROVIDED BY:  
(LATEST CAD FILE PROVIDED JULY 9, 2021)

**SOUTHLAND**  
ENGINEERING  
CIVIL ENGINEERS - LAND SURVEYORS - LAND PLANNERS  
114 OLD MILL ROAD, CARTERSVILLE, GA 30120 PH: 770.387.0440 FAX: 770.807.5151

NATURAL GAS MAIN EXTENSION TRANSWESTERN INDUSTRIAL	
EROSION CONTROL PLAN BEGIN PROJECT TO STA. 25+00	
 <p><b>City of Cartersville</b> G A S S Y S T E M P.O. Box 1390 • 155 Old Mill Road • Cartersville, Georgia 30120 Telephone: 770-387-5642 • Fax: 770-387-5638 • www.cityofcartersville.org</p>	DESIGNED: B.S.F.
	DATE: FEBRUARY 2022
	SCALE: 1"=50'
	PROJ NO: SP-21-004
SHEET: ERO-01	

C:\BIB\BIB\APPDATA\LOCALTEMP\ACRIBIB\15172592\1004\EROSION FEBRUARY 16, 2022 - 033AM





CONSTRUCTION PLANS WERE PREPARED & PROVIDED BY:  
(LATEST CAD FILE PROVIDED JULY 9, 2021)



NATURAL GAS MAIN EXTENSION  
TRANSWESTERN INDUSTRIAL  
EROSION CONTROL PLAN  
STA. 25+00 TO END PROJECT

City of Cartersville  
G A S S Y S T E M  
P.O. Box 1390 • 155 Old Mill Road • Cartersville, Georgia 30120  
Telephone: 770-387-5642 • Fax: 770-387-5638 • www.cityofcartersville.org

DESIGNED: B.S.F.  
DATE: FEBRUARY 2022  
SCALE: 1"=50'  
PROJ NO: SP-21-004  
SHEET: ERO-02

C:\BIBER\BIBER\DATA\LOCAL\TEMP\ACHRIB\15172592\040\FINAL.DWG FEBRUARY 16, 2022 4:03:04PM